

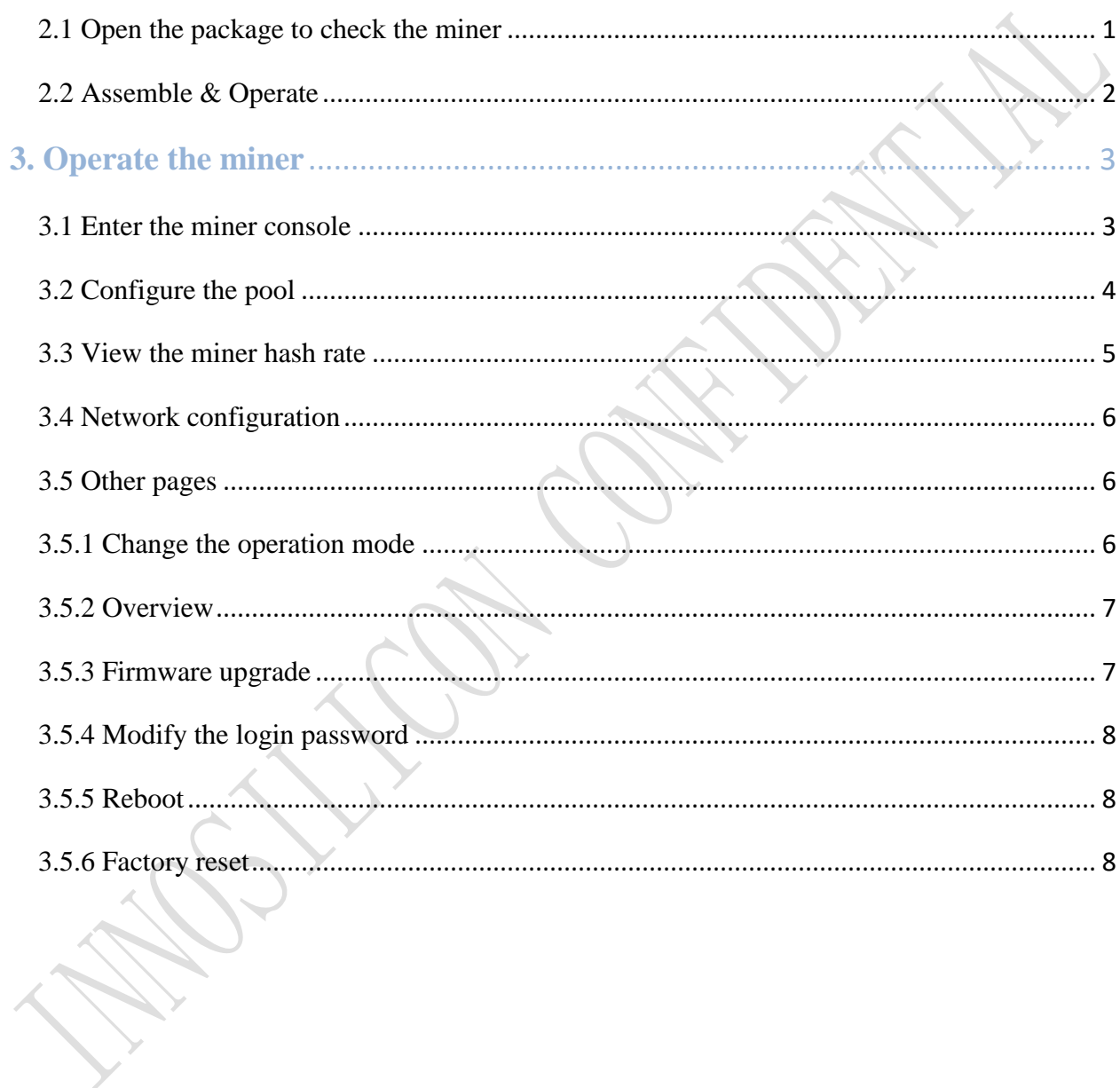
INNOSILICON

A10 ETH USER MANUAL



Catalogue

1. Overview	0
2. Assemble the miner	1
2.1 Open the package to check the miner	1
2.2 Assemble & Operate	2
3. Operate the miner	3
3.1 Enter the miner console	3
3.2 Configure the pool	4
3.3 View the miner hash rate	5
3.4 Network configuration	6
3.5 Other pages	6
3.5.1 Change the operation mode	6
3.5.2 Overview	7
3.5.3 Firmware upgrade	7
3.5.4 Modify the login password	8
3.5.5 Reboot	8
3.5.6 Factory reset.....	8



1. Overview



Specifications

Part Number	A10
Algorithm	Ethash
Hash Rate	500MH/s (±5%)
Size (L×W×H)	362mm(L)*136mm(W)*285mm(H)
Net Weight	8.1 KG
Operating Temperature	0--40 °C(device junction temperature)
Network Connection	Ethernet

2. Assemble the miner

2.1 Open the package to check the miner

- Check whether the warranty sticker is damaged, especially the one on hash boards PSU port side. If the warranty sticker is damaged when you receive the miner, please contact our after-sales personnel in time.
- Before assembling the miner, pls shake the miner gently. Please contact our after-sales personnel immediately if there is metallic collision sound.
- Check whether the two fans work well, if you find the fans broken please contact our after-sales personnel.
- The wiring of the miner shall not be changed including the power cable and data cable interface as shown in the figure below.



Notes:

There is an indicator on each hash board which shows the work status of the hash board. Being constantly lit means the hash board works properly.

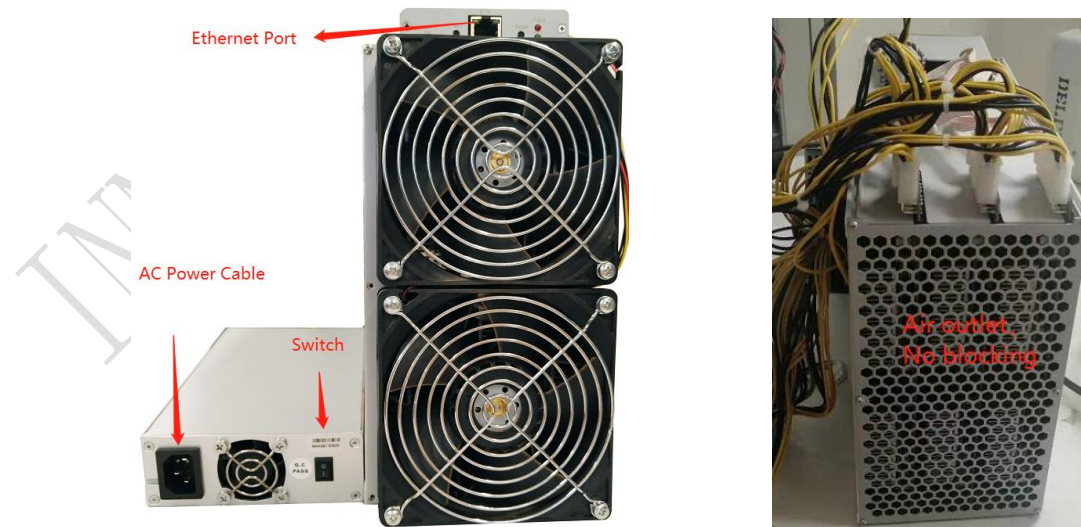
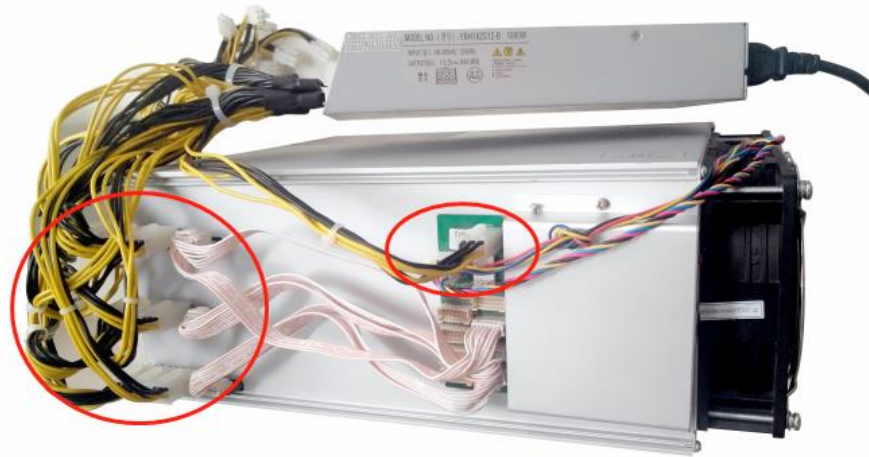
Flickering represents overtemperature of the hash board. Please check the fans of the miner, environment temperature and the ventilation conditions.

Being off means the hash board doesn't work. Please try to reboot the miner or change the data cable. Pls contact our after-sales team if the problem still exists.

2.2 Assemble & Operate

Connect the miner and the router by the Ethernet cable. Connect each hash board with PSU with three power lines and the control board with PSU with one power line and then the miner can start to run after being powered on.

Notes: A10 miners consume much more power under some modes. Pls choose proper sockets. Don't block the air outlet! Never place the power lines on the air outlet to avoid unnecessary damage!



Normal Indicator: Being constantly lit represents static IP and flickering represents DHCP.

Fault Indicator: Being on means there is something wrong with the network; Being off means it is OK.

IP SET button:

Press it for 1 to 4 seconds and the following functions can be realized:

- (1) Sending the miner IP to the “Set IP” tool;
- (2) Changing the miner to a Static IP within the specific range with the IPset tool

Press it for 4 to 15 seconds, the miner IP will be switched to DHCP and the pool settings will be restored to default settings.

Press it for 15 to 30 seconds to switch the Dynamic (Static) IP to Static (Dynamic) without changing pool settings.

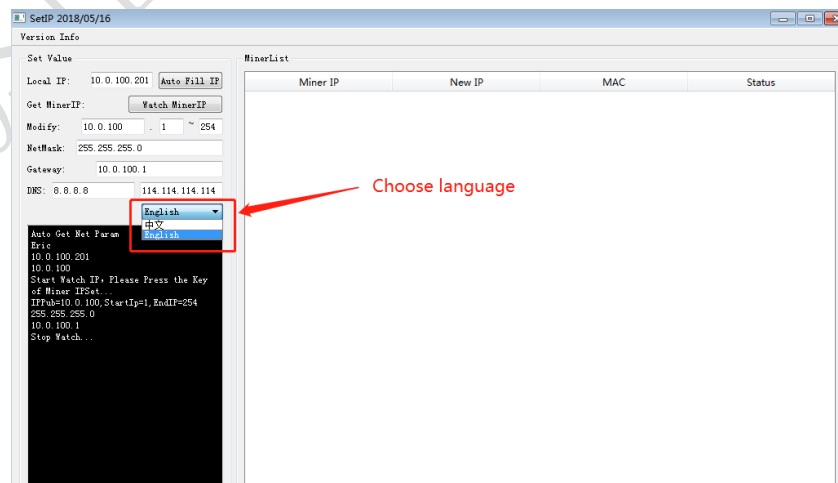
RESET button: Press the “Reset” button to restart the miner.

3. Operate the miner

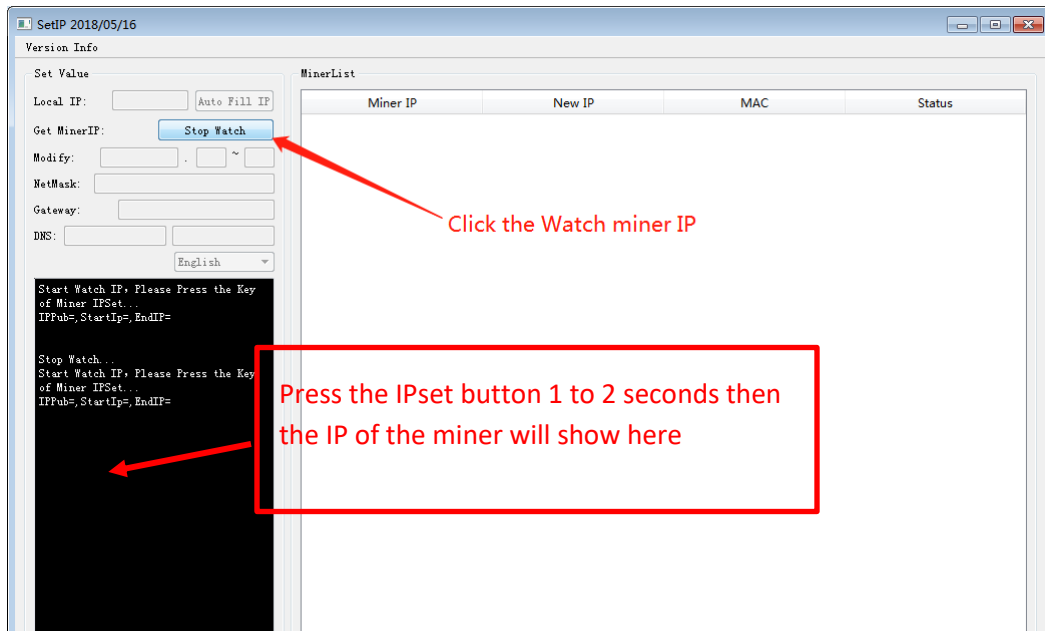
3.1 Enter the miner console

DHCP is the default IP mode of the miner (The normal indicator of the control board now is flickering in green when the DHCP service of the router is enabled.). Find the IP via the IP scanner or the SetIP tool developed by our company. Pls refer to the official support center for the downloading address https://www.innosilicon.com/html/support_en/tool.html.

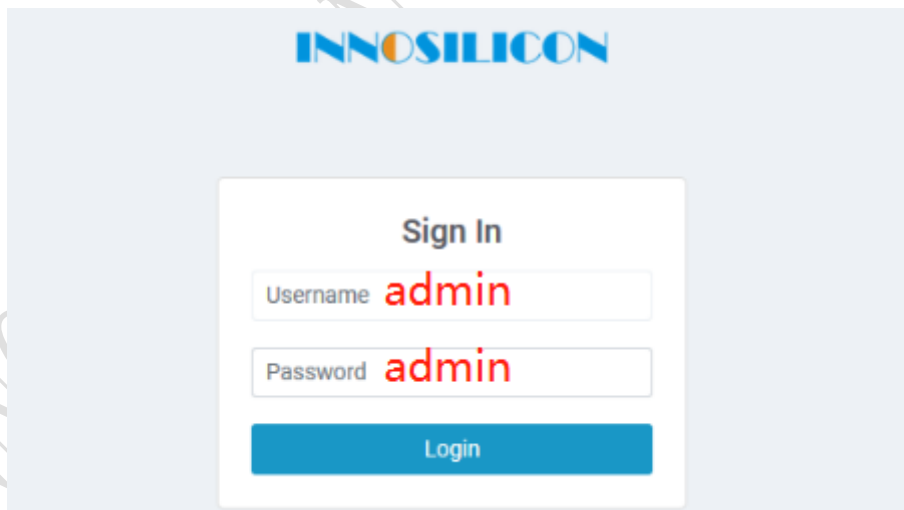
- a) Save SetIP in the pc on the same network with the miner, then double click the tool and choose the language.



b) Report the miner IP



Enter the IP of the miner in the browser and press the Enter button to go to the miner console page. Chrome is the suggested browser. (Please try with dragonadmin if the password admin is invalid.)



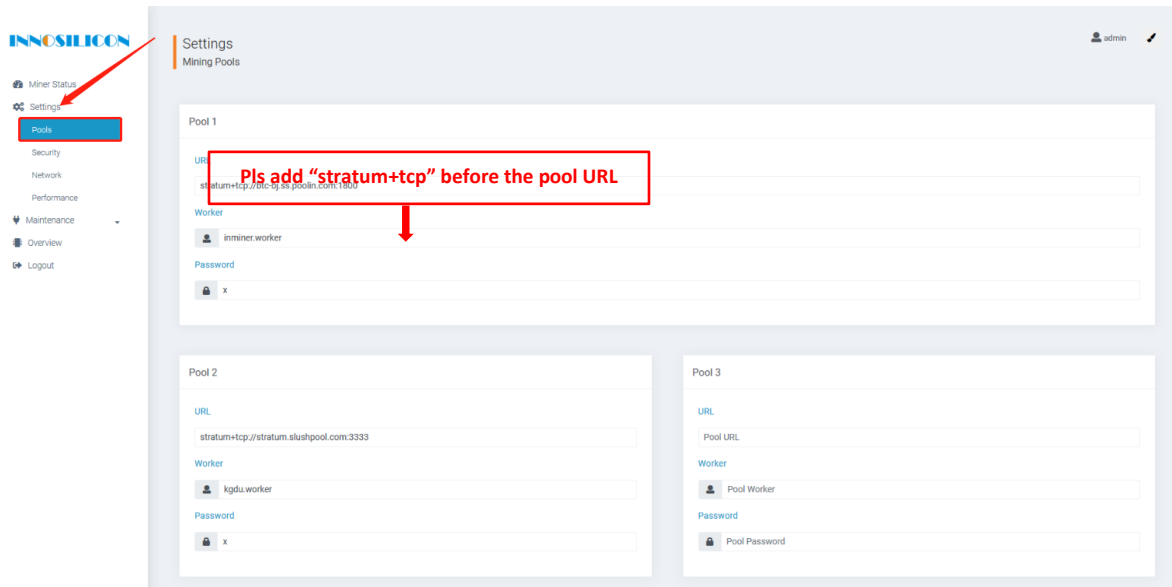
3.2 Configure the pool

Pls configure the pool to start mining after login.

Please use the suggested pool as below:

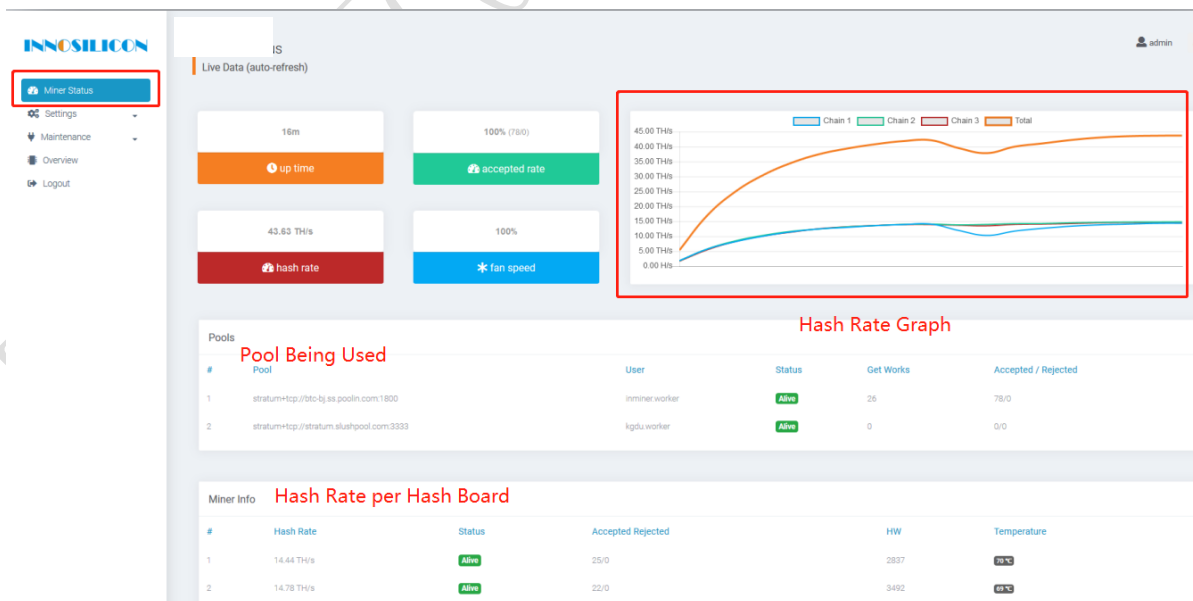
1 f2pool: stratum+tcp://eth.f2pool.com:6688

2 poolin: stratum+tcp://eth.ss.poolin.com:443

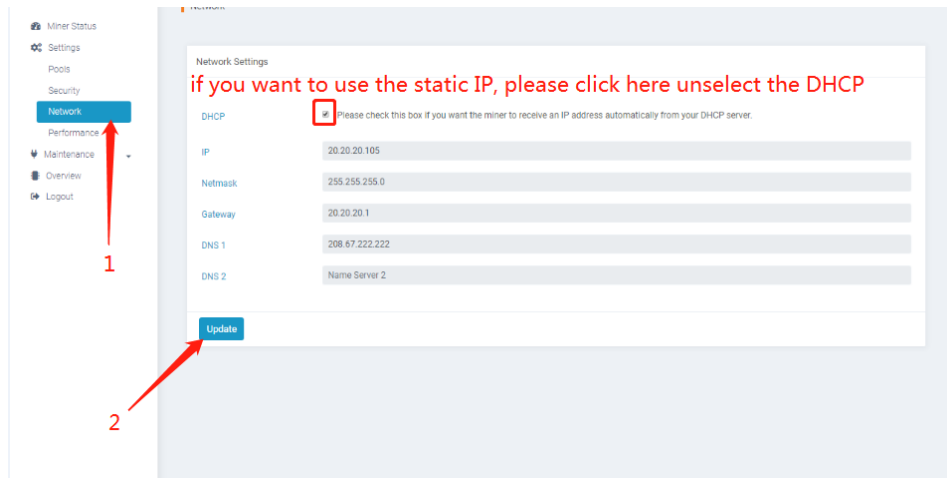


3.3 View the miner hash rate

After configuring the pool, the miner will mine for you. You can view the hash rate in the Miner Status screen.



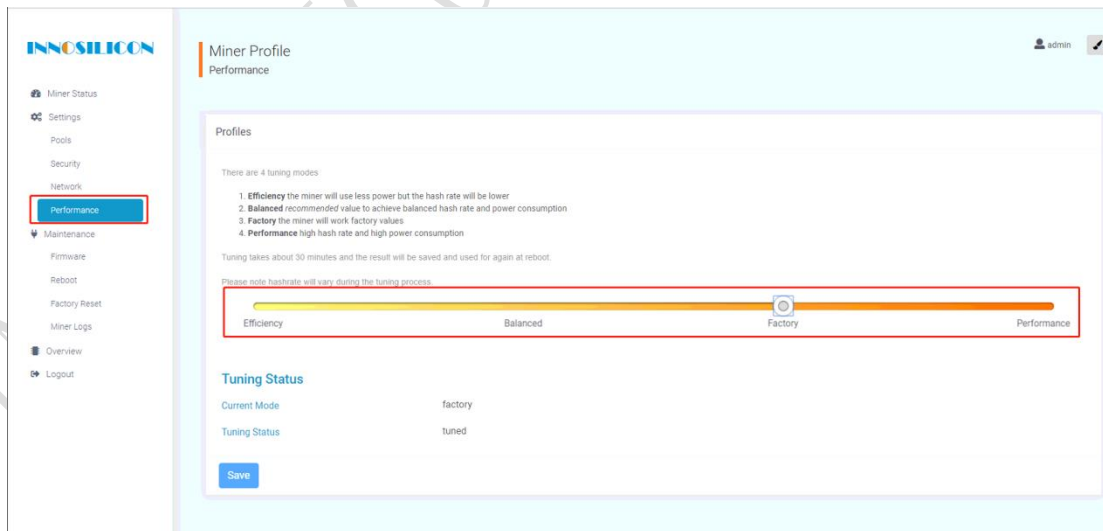
3.4 Network configuration



3.5 Other pages

3.5.1 Change the operation mode

There are 4 modes available and please click the “Save” icon after your modification.



3.5.2 Overview

Miner Status
Settings
Maintenance
Overview
Logout

Version	
Type	B29
Controller Version	g19
MAC Address	a0:b0:45:00:2f:94
Build Date	17th of April 2018 12:42 PM
Platform Version	b29_20180417_124258

Network Status	
Type	dhcp
IP	20.20.20.105
Netmask	255.255.255.0
Gateway	20.20.20.1
Name Server 1	208.67.222.222
Name Server 2	

System	
Uptime	08:08:10 up 57 min, load average: 0.73, 0.73, 0.67
Memory Used	55336 kb / 250544 kb 22%
Memory Free	195208 kb / 250544 kb 78%
Cached Used	33676 kb / 244628 kb 14%
Cached Free	210952 kb / 244628 kb 86%

3.5.3 Firmware upgrade

Miner Status
Settings
Maintenance
Firmware
Reboot
Factory Reset
Overview
Logout

Upgrade

1. The update .swu file should be obtained from our support center
2. Do not power off or refresh this page during the upgrade process
3. All your settings will be preserved

选择文件 未选择任何文件

Upgrade Now

Latest Firmware

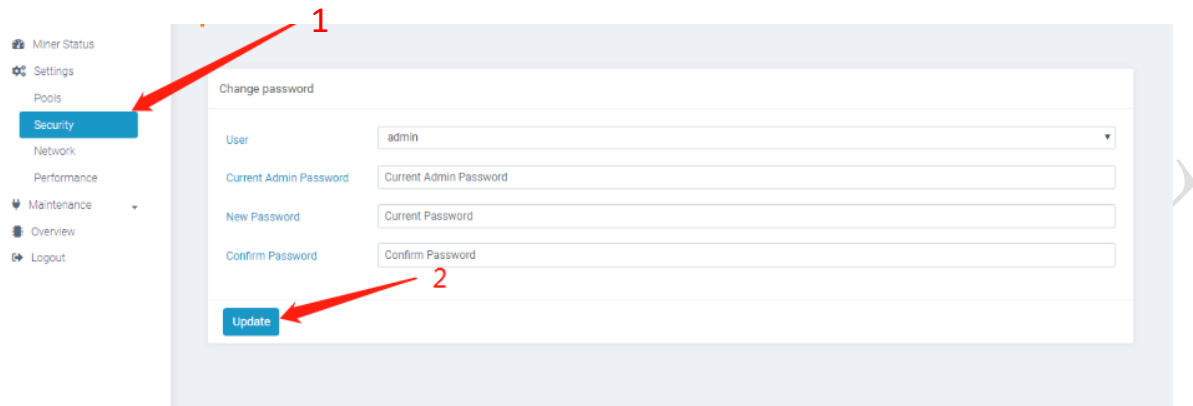
Check for firmware updates.

Check Now

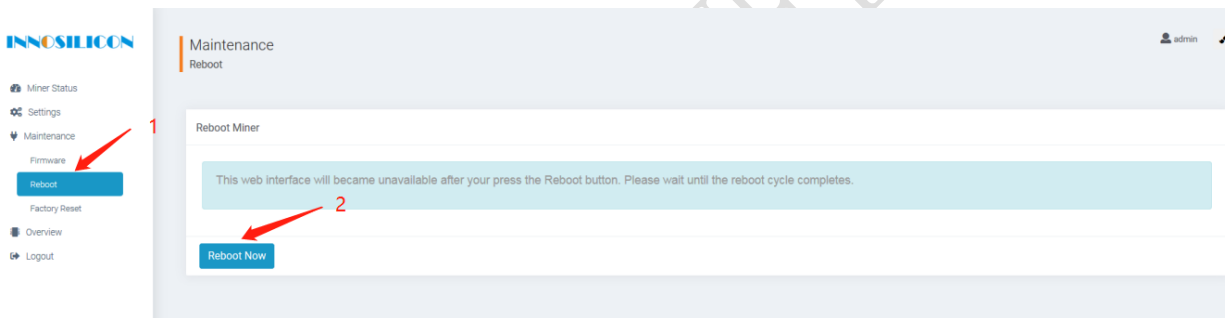
select the firmware file

start update

3.5.4 Modify the login password



3.5.5 Reboot



3.5.6 Factory reset

