

WhatsMinerTool operation guide of WhatsMiner V4.0



Shenzhen MicroBT Electronics

Technology Co., Ltd

1. Summary.....	3
2. Runtime environment.....	3
3. Tool main interface.....	3
4. Miner IP.....	4
4.1. Add the starting IP segment.....	4
4.2. Import IP.....	5
5. Start monitoring.....	5
5.1. Filter lists by status.....	6
5.2. Filter list by model	6
6. Firmware upgrade.....	7
6.1. Select firmware files.....	7
6.2. Start upgrading firmware.....	7
7. Collocation pool.....	8
7.1. Setting pool in front of mine pool.....	8
7.2. Start collocating mine pools.....	8
8. Modify passwords.....	9
9. Permission configuration.....	9
10. Remote Control.....	10
10.1. Restarting miner.....	10
10.2. Close the miner.....	11
10.3. Switch hash rate mode.....	11
10.4. Restore DHCP/factory setting.....	12
10.5. Turn on the light.....	12
10.6. Use SSH privileges.....	13
10.7. Web page setting pools permission.....	13
11. Export data.....	14
12. Detect and set IP.....	14
12.1. Detection IP.....	14
12.2. Set Static IP.....	15
13. Setting windows.....	16

1. Summary

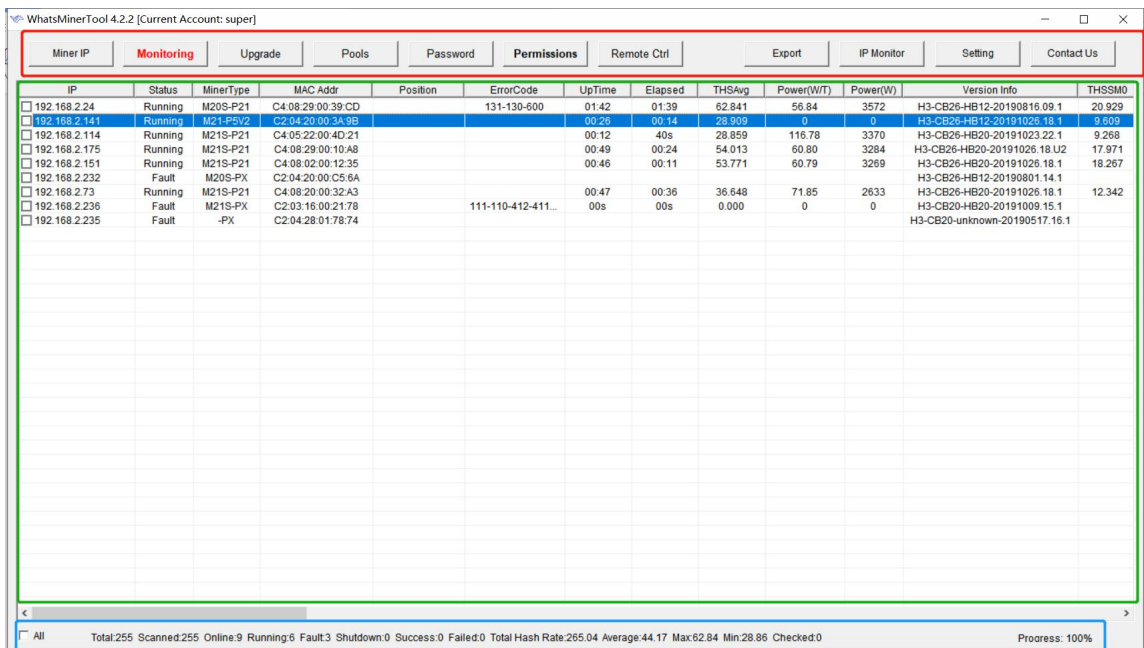
This article introduces the operating instructions of software WhatsMinerTool. The reader is expected to be the relevant personnel of mine operation and maintenance. Some functions only support firmware versions after 20191024.

2. Runtime environment

WhatsMinerTool can be run independently on a 64-bit system on PC Windows 7-8-10.

3. Tool main interface

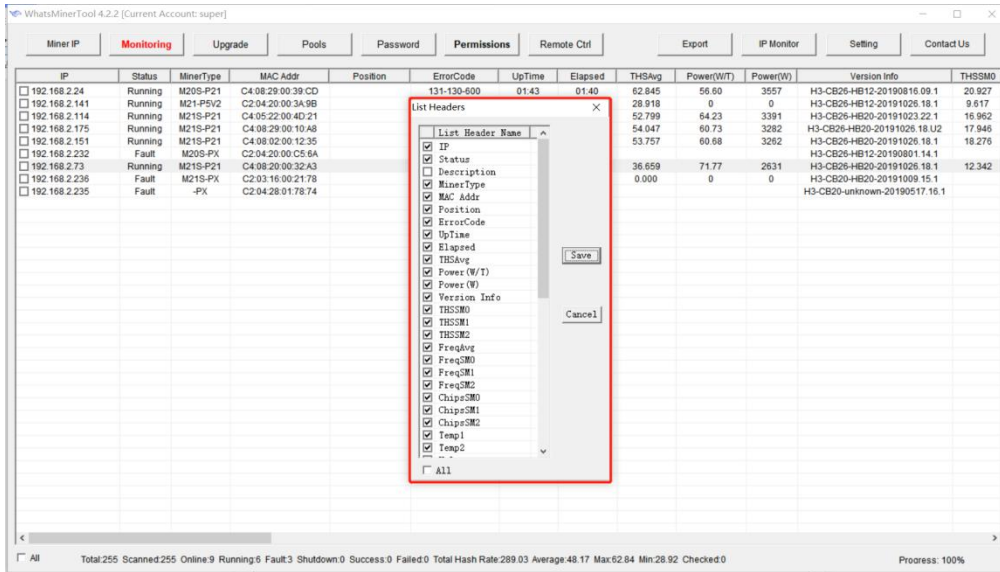
After you run the WhatsMinerTool application, the main interface is displayed as follows:



Of which:

- ① Inside the red box is the function selection area.
- ② Inside the green box is the Whatsminer list box.
- ③ Inside the blue box displays the status bar.

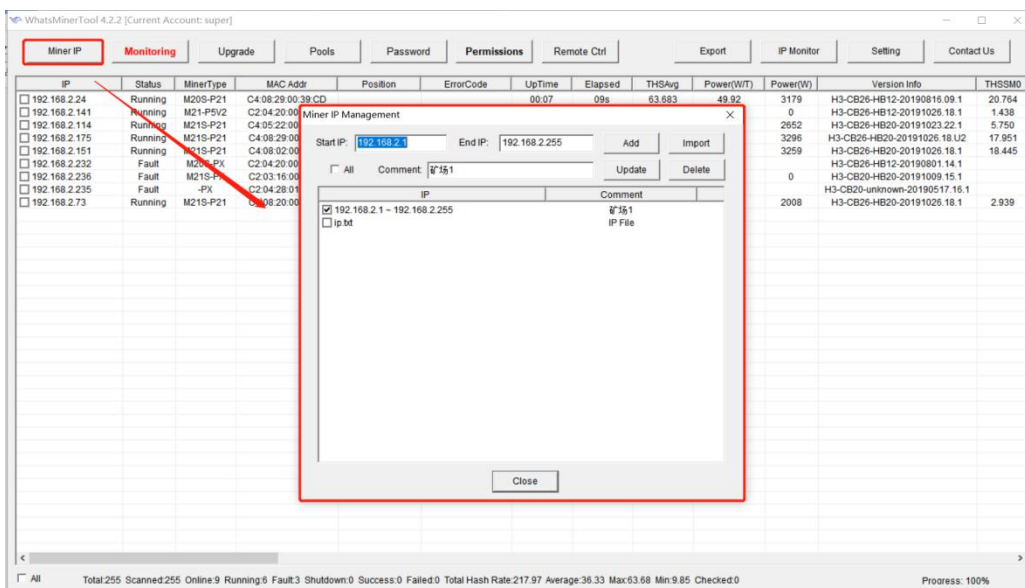
The configuration list display item rightclicks in the space outside the Whatsminer list box and pops up the list options window from the data items displayed in the configuration list, as shown in the following figure:



4. Miner IP

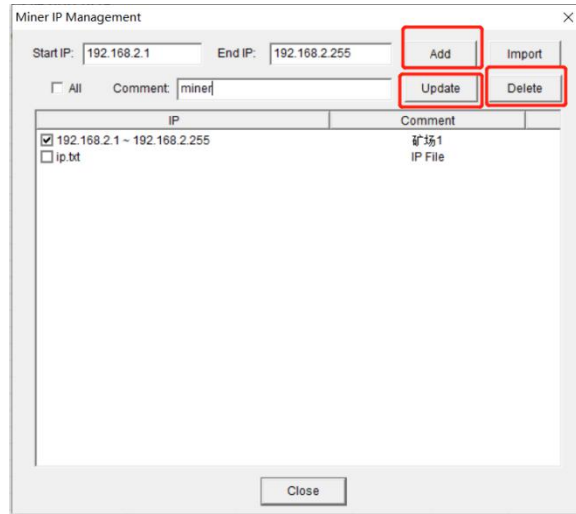
4.1. Add the starting IP segment

Click on the [Miner IP] button to pop up the Miner IP management window, as shown in the following figure:



Enter the corresponding IP segment in the Start IP and End IP input fields, and then click Add.

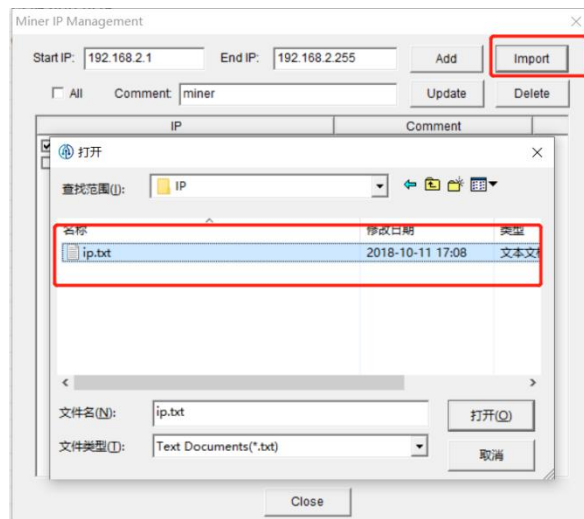
After the IP segment is selected, there will be a blue background color. and you can perform [Update] or [Delete] operation:



Note: check the left check box to indicate that the address section is in scan rang

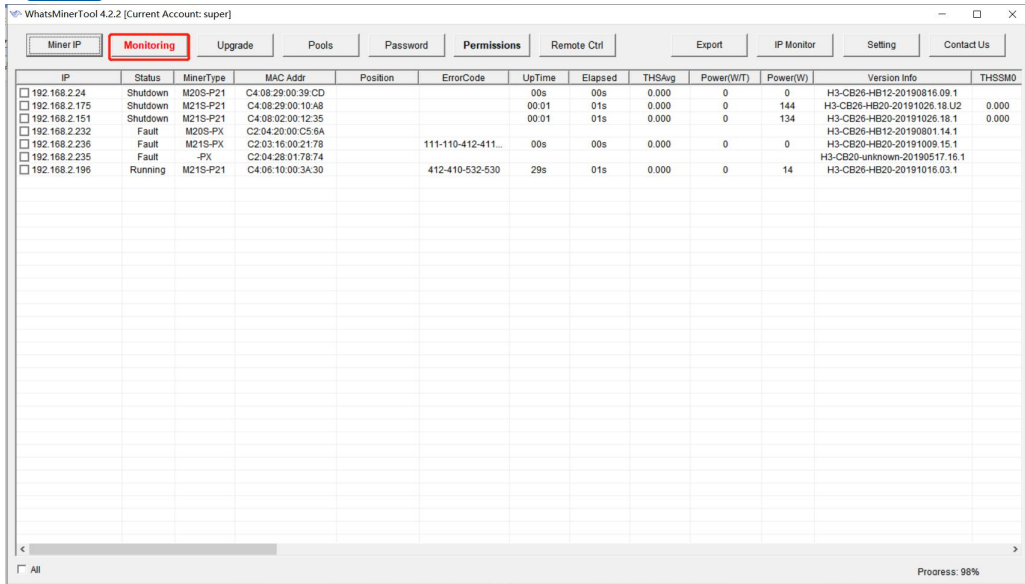
4.2. Import IP

Click the Import button, select the (Txt format of the IP file you want to import in the pop up box that appears), click Open:



5. Start monitoring

After the IP segment is saved by inputting the IP segment in the mining machine IP management window, click the "start monitoring" button, and the list box will list the running state of the mining machine in the current monitoring address segment, as shown below:

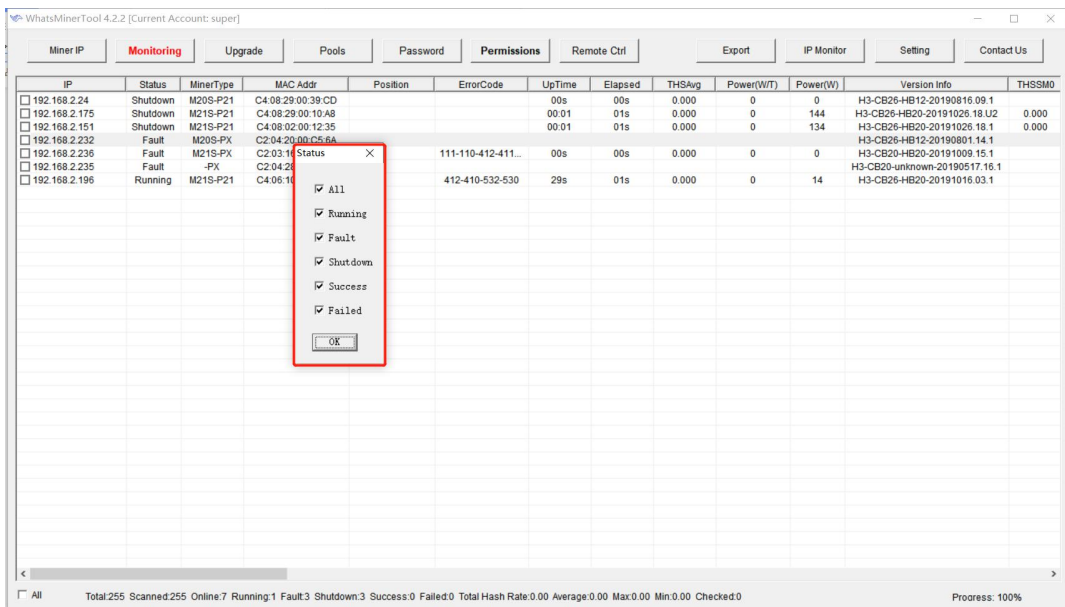


Miner IP	Status	MinerType	MAC Addr	Position	ErrorCode	UpTime	Elapsed	THSAvg	Power(W/T)	Power(W)	Version Info	THSSMO
<input type="checkbox"/> 192.168.2.24	Shutdown	M20S-P21	C4:08:29:00:39:CD			00s	00s	0.000	0	0	H3-CB26-HB12-20190816.09.1	
<input type="checkbox"/> 192.168.2.175	Shutdown	M21S-P21	C4:08:29:00:10:A8			00:01	01s	0.000	0	144	H3-CB26-HB20-20191026.18.U2	0.000
<input type="checkbox"/> 192.168.2.151	Shutdown	M21S-P21	C4:08:02:00:12:35			00:01	01s	0.000	0	134	H3-CB26-HB20-20191026.18.1	0.000
<input type="checkbox"/> 192.168.2.232	Fault	M20S-PX	C2:04:20:00:C5:6A								H3-CB26-HB12-20190801.14.1	
<input type="checkbox"/> 192.168.2.236	Fault	M21S-PX	C2:03:16:00:21:78		111-110-412-411...	00s	00s	0.000	0	0	H3-CB20-HB20-20191009.15.1	
<input type="checkbox"/> 192.168.2.235	Fault	-PX	C2:04:28:01:78:74								H3-CB20-unknown-20190517.16.1	
<input type="checkbox"/> 192.168.2.196	Running	M21S-P21	C4:06:10:00:3A:30		412-410-532-530	29s	01s	0.000	0	14	H3-CB26-HB20-20191016.03.1	

Note: monitoring details can refer to the status display bar at the bottom of the window. Monitoring operation can be stopped at any time during the monitoring process. The time interval for monitoring the miner can be set in the setting window, as shown below:

5.1. Filter lists by status

Right-click anywhere outside the "Miner Type" column in the miner status list box, and the tool will display the "Status Options" bullet box, as follows:

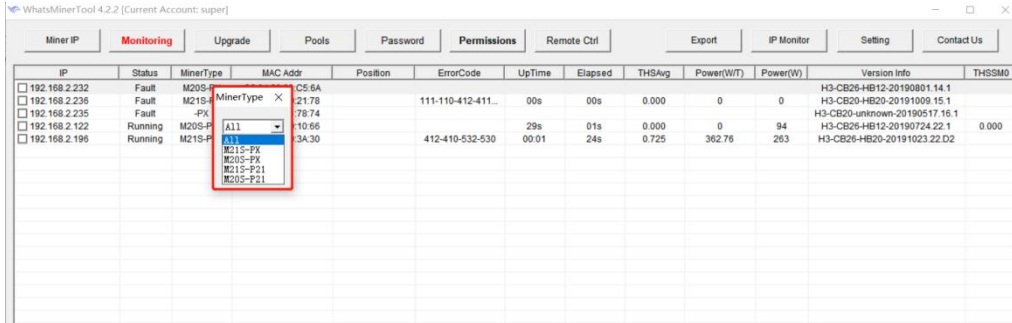


Miner IP	Status	MinerType	MAC Addr	Position	ErrorCode	UpTime	Elapsed	THSAvg	Power(W/T)	Power(W)	Version Info	THSSMO
<input type="checkbox"/> 192.168.2.24	Shutdown	M20S-P21	C4:08:29:00:39:CD			00s	00s	0.000	0	0	H3-CB26-HB12-20190816.09.1	
<input type="checkbox"/> 192.168.2.175	Shutdown	M21S-P21	C4:08:29:00:10:A8			00:01	01s	0.000	0	144	H3-CB26-HB20-20191026.18.U2	0.000
<input type="checkbox"/> 192.168.2.151	Shutdown	M21S-P21	C4:08:02:00:12:35			00:01	01s	0.000	0	134	H3-CB26-HB20-20191026.18.1	0.000
<input type="checkbox"/> 192.168.2.232	Fault	M20S-PX	C2:04:20:00:C5:6A								H3-CB26-HB12-20190801.14.1	
<input type="checkbox"/> 192.168.2.236	Fault	M21S-PX	C2:03:16:00:21:78		111-110-412-411...	00s	00s	0.000	0	0	H3-CB20-HB20-20191009.15.1	
<input type="checkbox"/> 192.168.2.235	Fault	-PX	C2:04:28:01:78:74								H3-CB20-unknown-20190517.16.1	
<input type="checkbox"/> 192.168.2.196	Running	M21S-P21	C4:06:10:00:3A:30		412-410-532-530	29s	01s	0.000	0	14	H3-CB26-HB20-20191016.03.1	

- All
- Running
- Fault
- Shutdown
- Success
- Failed

5.2. Filter list by model

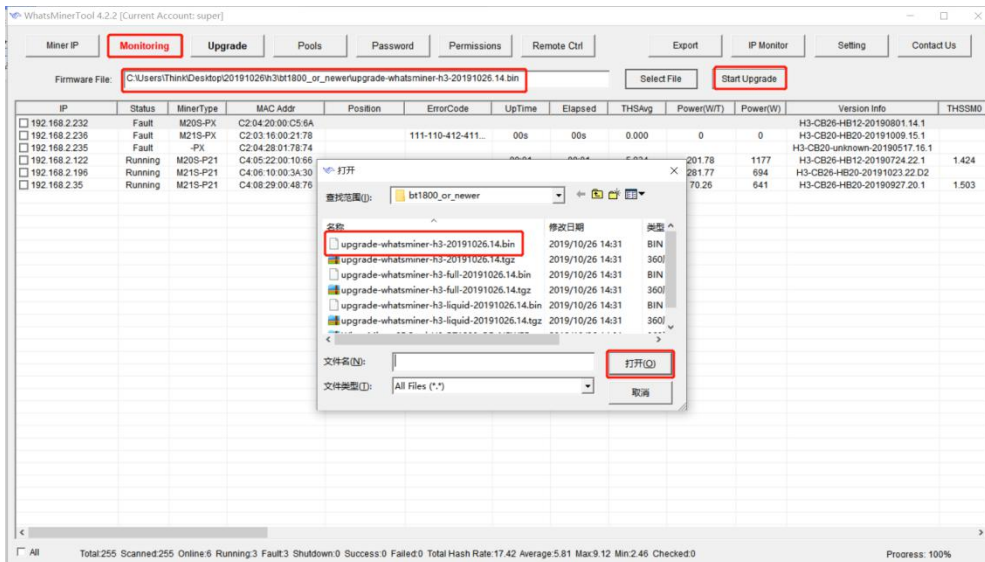
In the miner status list box, right-click on the "Miner Type" column, the tool will display the "Miner type" bullet box, as follows:



6. Firmware upgrade

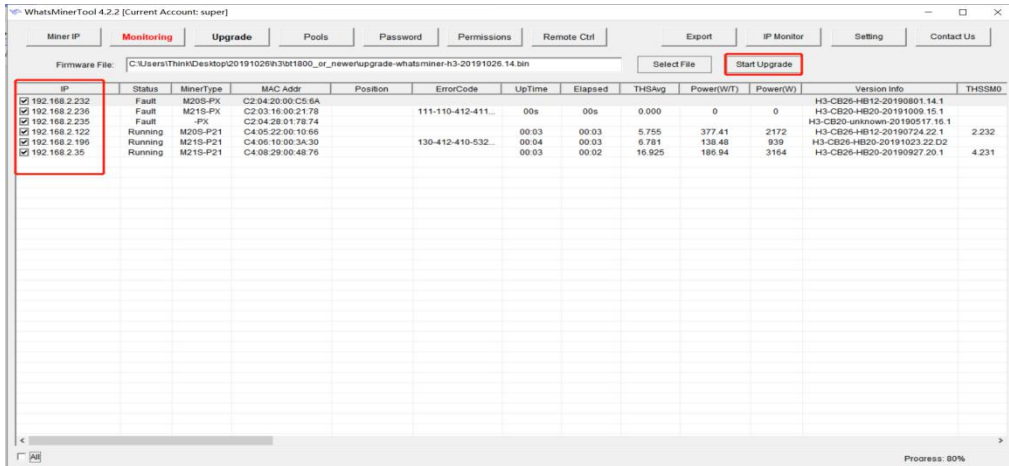
6.1. Select firmware files

Click on the Tool [Upgrade Firmware] button, click [Select Firmware] and select the firmware file to upgrade in the bullet-box displayed, as follows:



6.2. Start upgrading firmware

Select the firmware file, check the IP of the miner to be upgraded, and click the [Start Upgrading] button to upgrade, as follows:

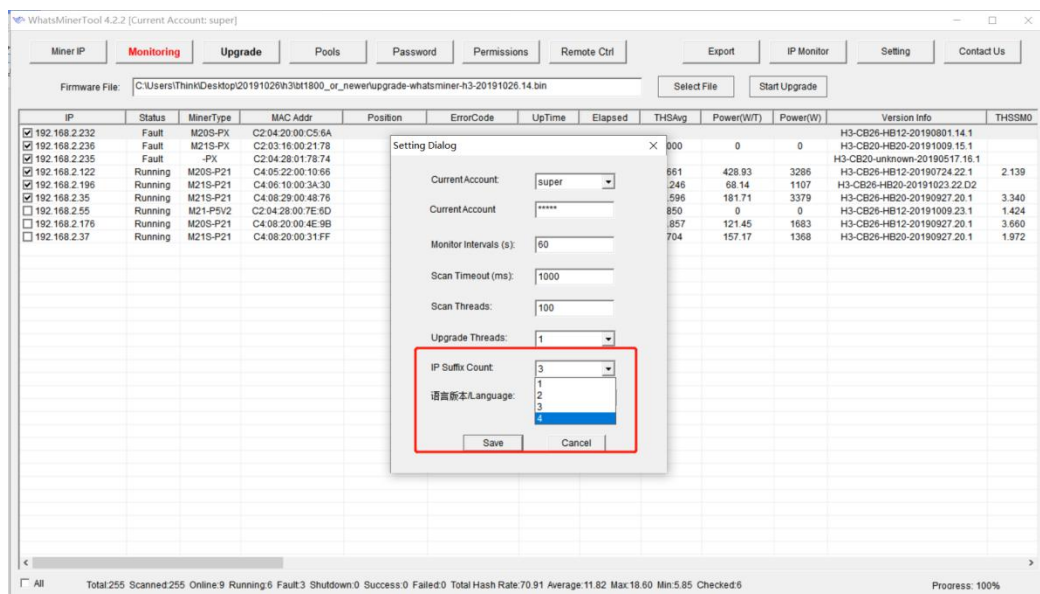


When the dialog box pops up, click the OK button. The status shows "success" and the upgrade is successful; otherwise, it shows "failure".

7. Collocation pool

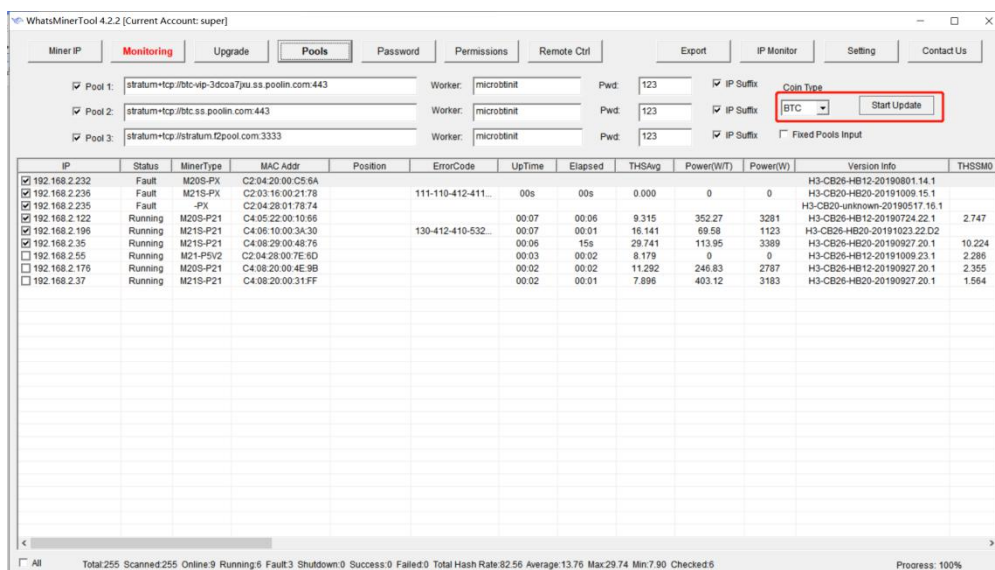
7.1. Setting pool in front of mine pool

Click on the [Settings] button to pop up the settings window. The number of IP suffixes for miners can be selected from 1 to 4. Other options can be configured according to the needs. Configuration is completed by clicking the [Save] button to save. The following figure is as follows:



7.2. Start collocating mine pools

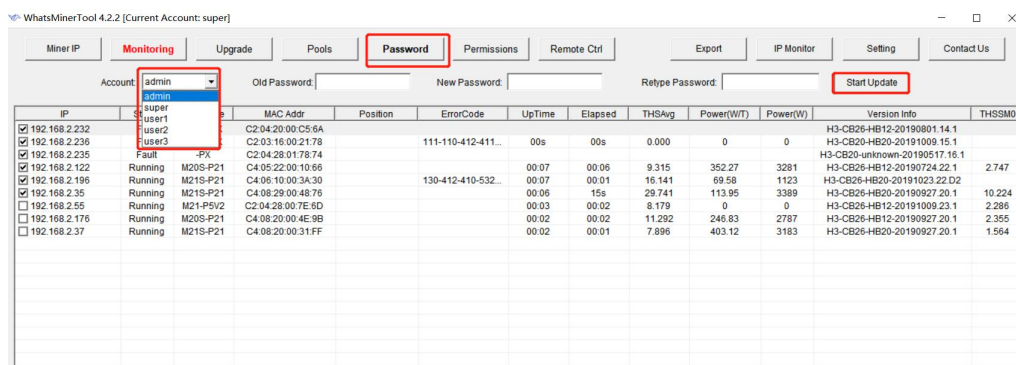
Click on the [Pools] button, edit the mine address, miner name, password, check or not select the "IP suffix", select the miner's currency, then select the miner's IP that needs to be configured, click on the "Start Upgrade" button, tick the [Fixed Pools] button to lock the Miner you have set up at present, as follows:



When the dialog box pops up, click OK.

8. Modify passwords

Check the miner IP, click the "Password" button, select admin or super, user1, user2, user3, then enter the old password (the default password is the same as the account number), then enter the new password, and click the "Start Upgrade" button, as follows:



9. Permission configuration

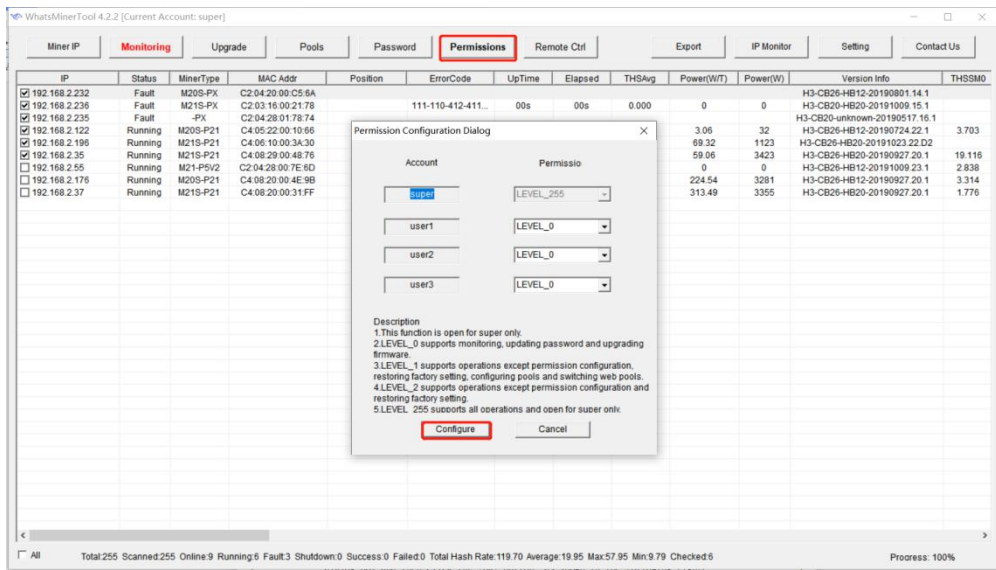
Add a super administrator and a normal administrator account on miner tool. The

super administrator can configure permissions for the general administrator.

Click on [Permissions] button to configure different privileges for three general administrator accounts.

To do this, you need to log in to the super super administrator account. At present, the login account can be viewed in the upper left corner of the tool.

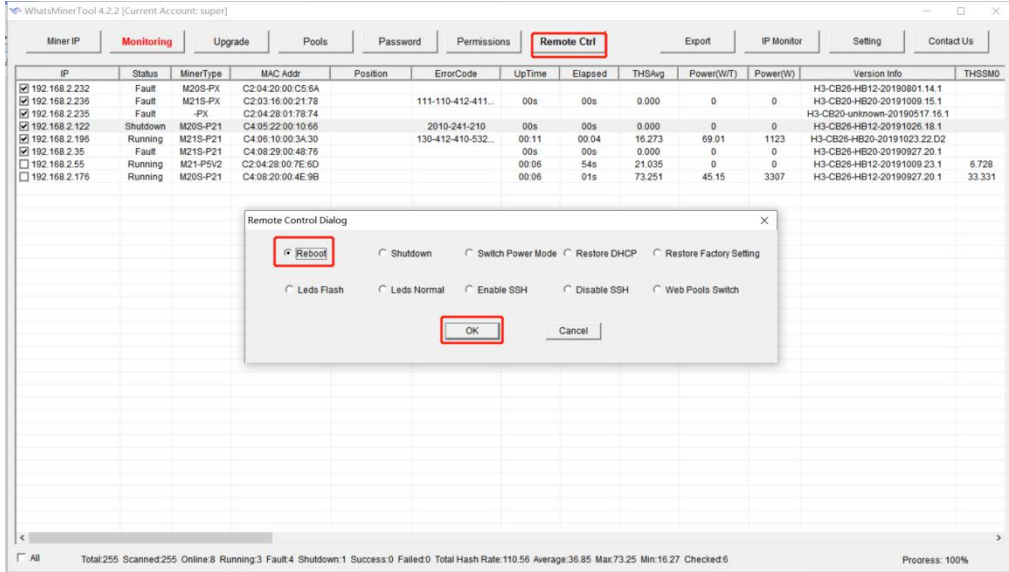
By default, the super super administrator account can be logged in to perform all operations on the miner. To login to other accounts, click Login at Setting.



10. Remote Control

10.1. Restarting miner

Check the miner IP, click the [Remote Ctrl] button, select Reboot in the pop-up dialog box, and then click the [OK] button, as shown in the following figure:

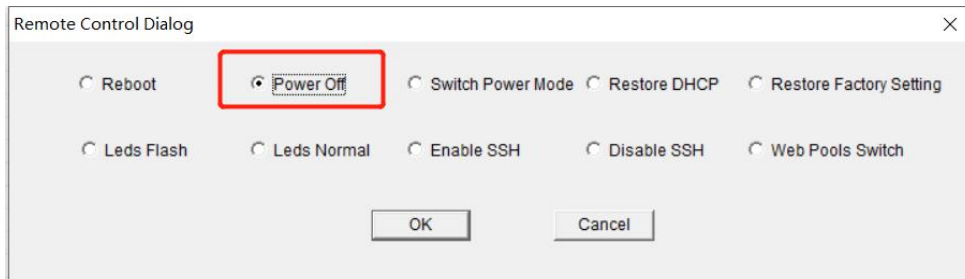


When the dialog box pops up, click the OK button.

10.2. Close the miner

Check the miner IP, click the [Remote Ctrl] button, select the Power Off in the pop-up dialog box, and then click the [OK] button.

Note: the Close the miner only supports M10, D1 and other latest miners.

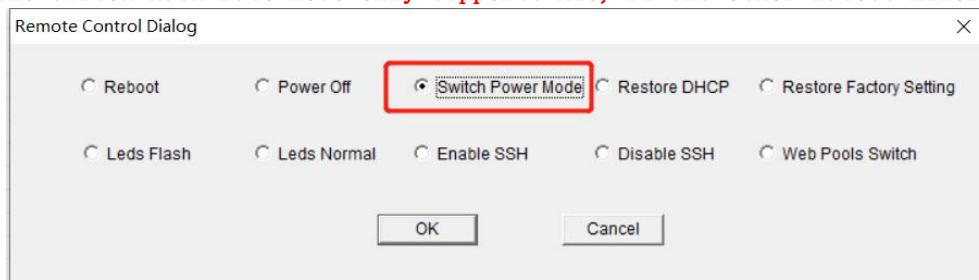


When the dialog box pops up, click the [OK] button.

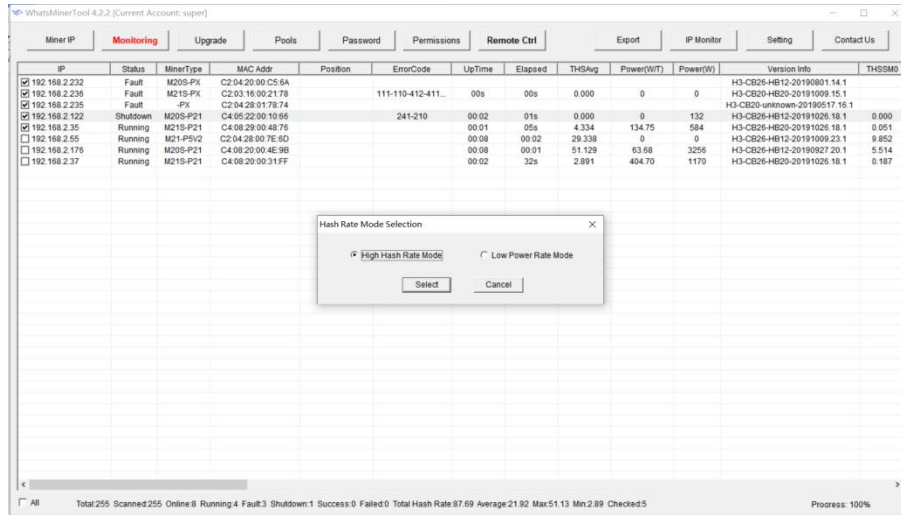
10.3. Switch hash rate mode

Check the miner IP, click the [Remote Ctrl] button, select the Switch Power Mode in the pop-up dialog box, and then click the [OK] button.

Note: the switch hash rate mode only supports M10, D1 and other latest miners.

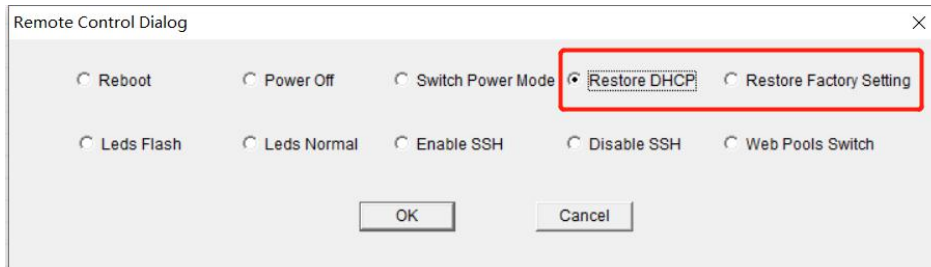


select High Hash Rate Mode of Low Power Rate Mode in the pop-up dialog box, and then click the [select] button, as shown in the following figure:



10.4. Restore DHCP/factory setting

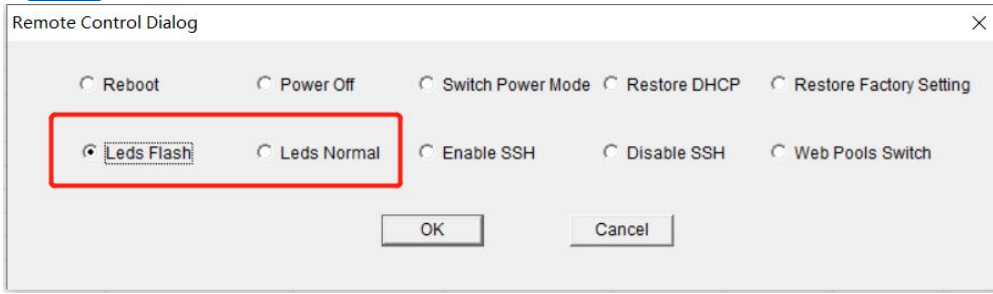
Check the miner IP, click the [Remote Ctrl] button, select "Restore DHCP" or "Restore Factory Settings" in the pop-up dialog box, and then click the [OK] button, as follows:



After choosing to complete the operation, the miner will restore the dynamic IP or the factory settings.

10.5. Turn on the light

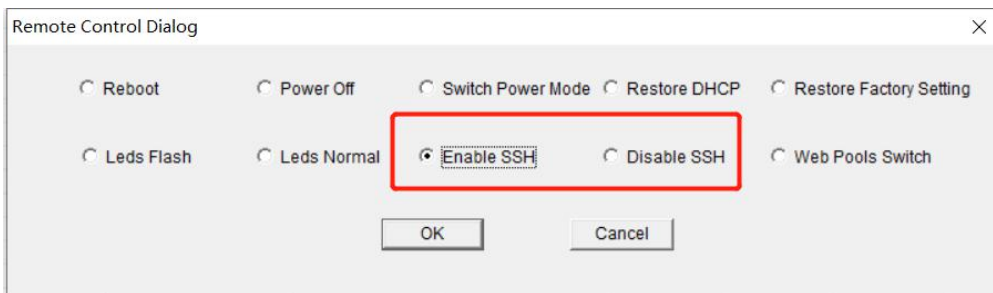
Check the miner IP, click the [Remote Ctrl] button, select the Leds Flash in the pop-up dialog box, and then click the select button, as follows:



After the operation is completed, the indicator light of the selected miner will flicker quickly, which is convenient for locating the miner quickly and accurately. Then choose the [Leds Normal], the miner indicator is restored to the previous flashing state.

10.6. Use SSH privileges

Check the miner IP, click the [Remote Ctrl] button, select Enable SSH in the pop-up dialog box, and then click the [OK] button, as follows:



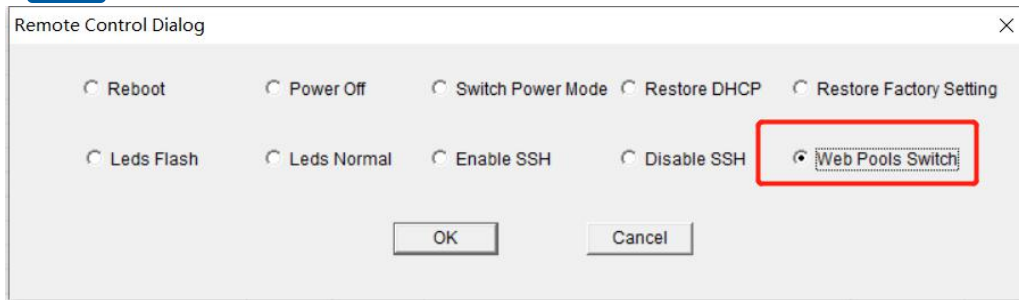
After the operation is completed, the miner will be open to use SSH privileges, re-select [Disable SSH], and the miner will be prohibited to use SSH privileges. Miner default is to prohibit SSH, SSH can be viewed in the status bar with the web page to set the status of the mine.

WhatsMinerTool 4.2.2 [Current Account: super]

Monitoring												Upgrade	Pools	Password	Permissions	Remote Ctrl	Export	IP Monitor	Setting	Contact Us
Volt	SpdIn	SpdOut	PowerSpd	Power Version	HashRate	CoinType	HashRate	Account Permission			SSH	WebPool	Active Pool							
					23119:	BTC	High	super=255 user1=0 user2=0 user3=0			On	On								
					18752:	BTC	High	super=255 user1=0 user2=0 user3=0			Off	Off								
1160	7170	7140	8850	P21-102215.00..	22566.22342.23119	BTC	High	super=255 user1=0 user2=0 user3=0			Off	On	stratum+tcp://btc-vip-3dcoa7ju.ss.poolin.com:443							
1220	860	720	4020	P21-102220.00..	19127.19393.19203	BTC	High	super=255 user1=0 user2=0 user3=0			Off	On	stratum+tcp://btc-vip-3dcoa7ju.ss.poolin.com:443							
20	3540	3390	0		9810.9726.9835	BTC	High	super=255 user1=0 user2=0 user3=0			Off	On	stratum+tcp://btc-vip-3dcoa7ju.ss.poolin.com:443							
1189	4530	4590	8940	P21-102219.00..	22554.22793.23014	BTC	High	super=255 user1=0 user2=0 user3=0			Off	On	stratum+tcp://btc-vip-3dcoa7ju.ss.poolin.com:443							
1230	1530	1530	5250	P21-102219.00..	18641.18299.18586	BTC	High	super=255 user1=0 user2=0 user3=0			Off	On	stratum+tcp://btc-vip-3dcoa7ju.ss.poolin.com:443							

10.7. Web page setting pools permission

Check the miner IP, click the [Remote Ctrl] button, select the Web Pools Switch in the pop-up dialog box, and then click the [OK] button, as follows:



In the pop-up window, you can display or hide the modified mine page in the background of the web page by selecting either Enabling Web Pool Function or Disabling Web Pool Function.



11. Export data

Click on the [Export] button to export the list information in the current status list box to an external file (.csv format, which can be opened and edited with Excel).

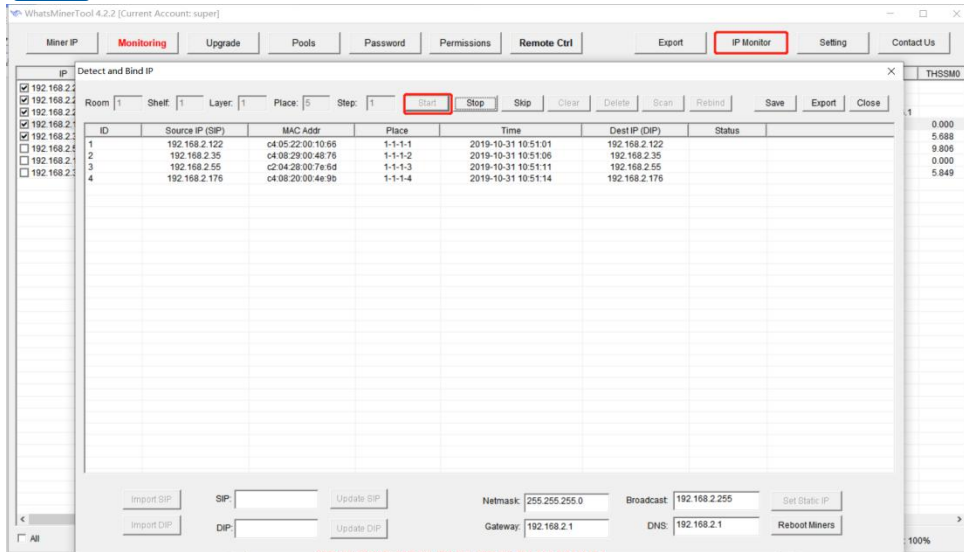
12. Detect and set IP

12.1. Detection IP

Click on the [IP Monitor] button, and then click the [Start] button to start the IP function of the mine detector. At this time, Whats Miner Tool will automatically detect the IP address reported by the mine.

IP reporting method: After starting the miner, press the [IPFOUND] button (long key) on the miner for several seconds, and wait for the indicator to flicker, indicating the completion of IP address reporting.

The interface to receive the reported IP is as follows:



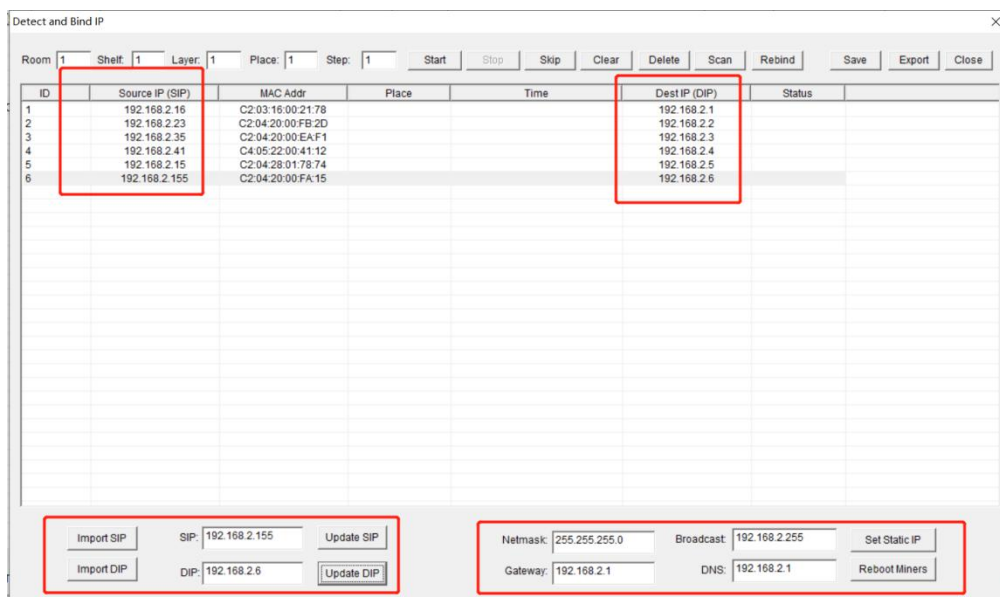
After IP detection is completed, you can click the [Save] button to save the current data, close the window and do not disappear, or the [Export] button to export the current mine IP list to the file.

12.2. Set Static IP

Setting the source IP of static IP can be selected from the detected IP or imported. Target IP can be imported or manually updated at the target IP in the lower left corner. After changing the target IP and the corresponding subnet mask, gateway, broadcast address, DNS, click the [Set Static IP] button to configure. When the status shows "Success", the setup succeeds.

Note 1: before setting a static IP, make sure that the mask address, broadcast address, gateway address and DNS address are set correctly.

Note 2: after successful setup, the miner will automatically restart and enable the newly set IP address.



13. Setting windows

Click on the [Settings] button tool to display the [Settings Window], according to the needs of settings:

You can choose to login to different administrator accounts, and you need to enter the password correctly before you can operate the administrator.

And you can also set "Auto Scan intervals", "Scan Timeout(S)", "Scan Threads", "Upgrade Threads", "IP suffix Count", and set the tool "语言版本/Language". It supports Chinese version and English version, as follows:

